

DRESS CODE

DRESS CODE POLICY: Proper dress and respect for the body are important in setting the pattern for appropriate school and social conduct. At Saint Katharine Drexel School we have a dress code that reflects high standards traditionally associated with our school. These codes are designed to encourage modesty that accounts for neatness, cleanliness, safety, and an environment that is conducive to learning. A responsible approach to personal appearance demonstrates respect for ourselves and for our school community. Cooperation in adhering to the dress code promotes self-discipline on the part of the students. It is the parent/guardian responsibility to ensure that the dress code is followed so that class time is not taken for teachers to remind the students and enforce the codes.

ONLY WORDING AND PICTURES WITH POSITIVE MESSAGES, CONNOTATIONS OR IMPLICATIONS ARE ACCEPTABLE. NOT ACCEPTABLE IS CLOTHING WITH PICTURES OR LETTERING ADVERTISING TOBACCO, ALCOHOL, DRUGS, ROCK GROUPS OR OTHER ITEMS/SYMBOLS THAT ARE HIGHLY DISTRACTING, HAVE SEXUALLY SUGGESTIVE WRITING OR STATEMENTS THAT ARE CONTRARY TO OUR CATHOLIC/CHRISTIAN PRINCIPLES, PHILOSOPHY AND VALUES.

DRESS CODE VIOLATIONS:

If a student is wearing something that does not meet dress code criteria as **DETERMINED BY THE TEACHER AND/OR PRINCIPAL** as being either inappropriate, unsafe, or distracting, he/she will inform the student of this and will provide notification to the student's parent/guardian:

- **FIRST VIOLATION** of the Dress Code: a notification will be sent to the parent/guardian who must sign and return it. A determination is made whether the student can correct his or her clothing. If the student can't correct his or her clothing, an item of clothing may be provided by the school. The item must be returned in 2 days, washed.
- **SECOND VIOLATION:** a notification, which must be signed by the parent/guardian and returned, will be sent to the parent/guardian; the student will also forfeit a lunch recess. The student will wear an item of clothing provided by the school.
- **THIRD VIOLATION:** a notification, which must be signed by the parent/guardian and returned, will be sent

to the parent/guardian; the student will serve a detention after school; the parent/guardian will also be required to provide an appropriate change of clothing which will be kept at school. Further violations will be handled on a case-by-case basis.

TOPS:

- **All tops will meet the minimum of collarbone height.** Examples of tops that fit this criterion include, but are not limited to, collared shirts, "crew-neck" shirts, "round-neck" t-shirts, etc.
- **Acceptable = Plain, Plaid, Solid; Striped, Floral.** All tops will meet the minimum of collarbone height. Examples of tops that fit this criteria include, but are not limited to, collared shirts, crew-neck" shirts, "round-neck" t-shirts, etc.
- **Not Acceptable =** Tops that do not meet this criteria (for example, "cammies," "scoop-neck" shirts, "v-neck" shirts, etc.) will not be worn, or must have another shirt that meets the above criteria worn underneath. The following are examples of tops to avoid: Tank tops, halter tops, spaghetti straps, sleeveless shirts with excessively large armholes, bare midriffs, tight-fitting or sexually suggestive tops. A tank top is any shirt that does not cover from the neck line to the rounding of the shoulder. (Girls: Sleeveless dresses and blouses may be worn with the exception of tank tops or if they have excessively large armholes.)

PANTS, SHORTS, SKIRTS, ETC:

- **Shorts, skirts, or dresses will be NO shorter than 2 inches above the knee.**

SKIRTS/SKORTS:

- Will be NO shorter than 2 inches above the knee and must be worn at waistline

PANTS:

- **Acceptable =** Classic carpenters, jeans, cargos, corduroys, sweat pants, wind pants, capris and slacks; must be worn at waistline
- **Not Acceptable =** bib overalls, camouflage, baggy, or "hanging on the floor" pants, spandex; leggings/stirrups; torn, excessively baggy; or overly tight pants; decorative trim, extra zippers, studs or excess pockets on material.

SHORTS:

- **Acceptable =** See pants; must be worn at waistline; will be NO shorter than 2 inches above the knee
- **Not Acceptable =** See pants
- **MAY BE WORN MAY 1 TO OCTOBER 1.**

FOOTWEAR:

- **Acceptable =** All shoes must be non-marking; clogs
- **Not Acceptable =** Jelly; platforms; heeels/roller shoes; flip-flops; or any item deemed to be unsafe or distracting

HAIR:

- **Acceptable =** Clean, combed and out of the eyes (bangs must be no longer than eyebrow level and must be kept out of the eyes for boys and girls)
- **Not Acceptable =** Unnatural hair dye and/or bleaching; extreme hairstyles

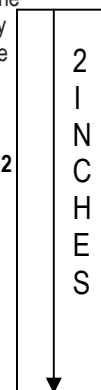
ACCESSORIES:

- **Acceptable =** Wristwatch; one ring; one necklace; one bracelet; stud earrings/hoops no larger than a quarter; one stud per ear
- **Not Acceptable =** Dangling or large hoop earrings; pocket chains; caps, scarves and other head gear; body piercing

MASS DAYS: Not Acceptable = jeans, sweats, wind pants, athletic wear, bib overalls, camouflage, baggy, or "hanging on the floor" pants, spandex/wind pants; leggings/stirrups; torn, excessively baggy; or overly tight pants; decorative trim, extra zippers, studs or excess pockets on material, T Shirts. It is expected that students will **dress up** for mass. **NON COMPLIANCE WILL IMMEDIATELY RESULT IN AN AFTER SCHOOL DETENTION.**

STUDENTS WILL FOLLOW THE SKDS DRESS CODE FOR ALL ACTIVITIES, EVENTS, AND CELEBRATIONS REPRESENTING SKDS.

APPROVED BY SCHOOL BOARD JUNE 19, 2008.



**SAINT KATHARINE DREXEL (SKDS) DRESS CODE
2008-2009 DRESS CODE
FREQUENTLY ASKED QUESTIONS:**

1) WHY THE CHANGES?

There are a number of reasons for these changes. Two of the major reasons are...

A. **For the sake of good order.** There are a wide variety of opinions regarding "modesty" in our culture today. Over the past couple years, it has become evident that these varying views of modesty are also present among our SKDS families. "Modesty" to one family is "immodesty" to another.

For the sake of good order, we are establishing a clear line of what is and isn't acceptable while under SKDS supervision. These clear expectations will help our students know what to wear, and what to avoid, while at SKDS. Without clear boundaries, confusion and disagreement related to the dress code will continue to be an issue at SKDS.

B. **To keep the issue of dress code from becoming a big distraction.** We understand that the issue of dress code will always take up a certain amount of time and effort among a student body and those who are asked to enforce it. At times, there will be "dress code distractions." However, since there are so many differences of opinion with regard to "what is acceptable and appropriate," the communication and enforcement of the dress code has become too great of a distraction.

Our administration, faculty, and staff are here for the primary purpose of educating our students. Repeatedly addressing dress code with a growing number of students and parents/guardians is beginning to take up a great deal of time and effort that could be used for the purpose of education. We want our teachers and students to be focusing on the matter of Catholic Christian education. When one issue – dress code – starts to detract from that purpose, we need to do something in order to address that issue.

2) WHAT DO PARENTS/GUARDIANS THINK ABOUT THE ISSUE OF DRESS CODE?

About five years ago, SKDS studied the dress code/uniform issue. Families were split down the middle: uniforms versus ordinary dress. However, differences of opinion on what is acceptable/appropriate and unacceptable/inappropriate remain. The last couple years have proven that some students and parents/guardians are not supportive of the code.

At the May School Board Meeting, Father John stated, "I want us to look as good as we are." Per his request, faculty, staff and school board revisited the dress code matter. Dress Codes from across the Archdiocese as well as from other dioceses and denominations were studied.

Because parents/guardians and students have at times seemed uncertain as to how to meet the dress code, the boundaries have been more clearly defined.

3) IS THIS CHANGE UNFAIR TOWARD THOSE WHO ARE ALREADY OBEYING THE CURRENT DRESS CODE?

Those who are obeying the current dress code are to be commended. Many are dressing in a way that respects the guidelines already established for this school year. Some are already dressing in a manner that lines up with our new guidelines for next year. Unfortunately, many continue to push the limits with "borderline" attire that, at times, can cross the line. We cannot continue to devote a high level of time and energy to the issue of what meets or does not meet the dress code. We do not want to revisit the dress code with each individual who may choose to interpret it in a very individualistic manner. As far as "fairness" is concerned, in many ways, it is "unfair" for those students who are already following the dress code to watch some of their classmates "push the limits"; and, at times, get away with it. It is also "unfair" when a student or a class isn't able to get the full attention and energy of a teacher because that teacher has to deal with yet another dress code issue.

4) ARE YOU PUTTING UNNECESSARY LIMITS ON A STUDENT'S FREEDOM?

We strive to allow our students to express their faith unhampered by an excessive amount of unnecessary rules. However, when one individual's freedom takes away from another's, limits must be enforced.

5) THESE GUIDELINES ARE STRICTER THAN WHAT I ALLOW AT HOME. ARE YOU SAYING THAT I'M NOT BEING STRICT ENOUGH?

We are not making any judgments on the level of discipline parents/guardians are carrying out in their homes. May God bless all of our parents/guardians as they seek to bring their children up with Christian morals and values.

A family's set of rules and style of enforcement will be different from a school's set of rules and style of enforcement. This is because the two situations are very different. Maintaining order and discipline among 300 students who have a wide variety of maturity

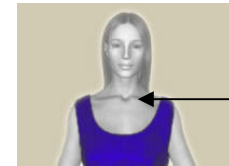
levels and family backgrounds is not the same as parenting a few children. Both situations present their unique challenges, but managing a "family of 300" is different from managing a "family of 5."

While your rules may be different in your home, we ask that you would respect and cooperate with our school's policies. As we modify our policies, our motivation is to do what is best for our students as we seek to provide them with the best Christian education possible at SKDS. For parents/guardians, this is a good opportunity to talk with your children about respecting and obeying authority. While a set of dress code rules might be man-made, the concept of submitting to those who are in authority over us is not. Obeying the authorities God has placed over us, and the rules they use to keep order, is a way of glorifying our Lord. Eventually, a student's place of employment may also have a standard of dress that is different from what is allowable in the home.

**6) WHAT EXACTLY IS, AND ISN'T, ACCEPTABLE?
The guidelines cited in the dress code provide ample explanation.**



Acceptable



Collar bone, not acceptable

**DRESS CODE APPROVED BY SCHOOL BOARD
JUNE 19, 2008.**